

## Series HPS-SAH, HPS-SAK, HPS-DAH, HPS-DAH/S, HPS-DAK, HPS-DAK/S Manual Non-Coded Pull Station



HPS-SAH



HPS-SAK

### STANDARD FEATURES

- Metal Construction
- Enclosed switch with glass rod (included)
- 10 Amps @ 120 VAC
- Available in: Single Action, Dual Action and Dual Action in Spanish (HPS-DAH/S)
- UL, CSFM Listed
- Made in USA



HPS-DAH



HPS-DAH/S

### DESCRIPTION

Hochiki America's Models HPS series pull stations are available in six models:

- HPS-SAH single action with Hex lock
- HPS-SAK single action with Key lock
- HPS-DAH dual action with Hex lock
- HPS-DAH/S dual action with Hex lock (Spanish)
- HPS-DAK dual action with Key lock
- HPS-DAK/S dual action with Key lock (Spanish)



HPS-DAK



HPS-DAK/S

Each model is constructed of a solid die cast housing and comes in glossy red. The back switch plate is plated steel. The electrical switch is rated for 10 Amps @ 120 VDC normally open contact rating. All models are connected via terminal block connections.

### PRODUCT LISTINGS

SIGNALING  
  
**LISTED**  
 S6512

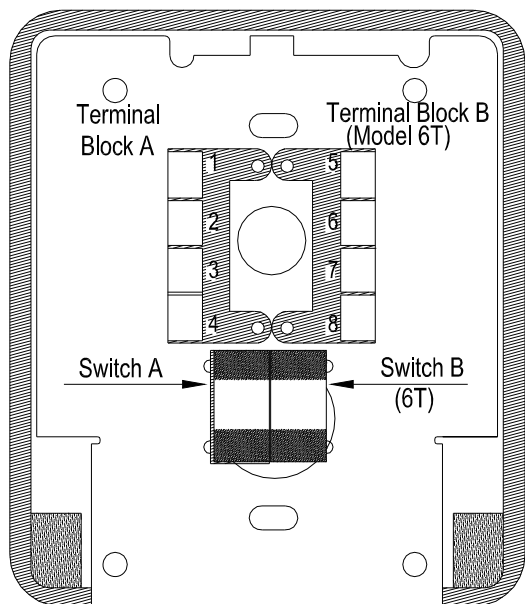


California  
 State Fire  
 Marshal

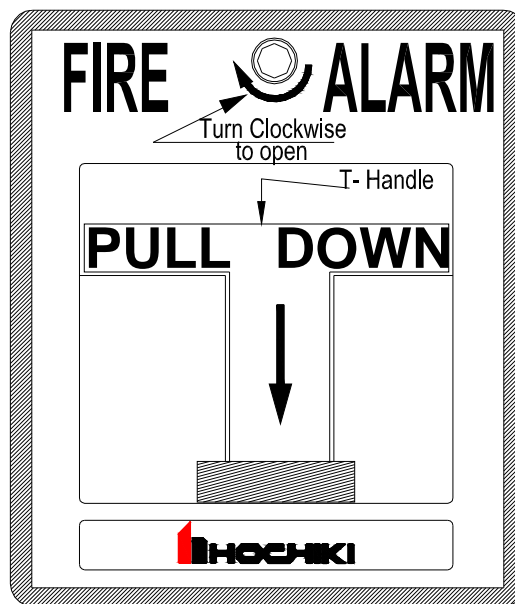
7150-0410:162

Continued on back.

**Rear View**



**Front View**



**SPECIFICATION**

Model	SAH, SAK, DAH, DAH/S, DAK, DAK/S	EXP./WTP. PRF.
Contact	SPST Form "A"	DPDT Form "C"
Terminal Block	A	A & B
Terminal Connecting	2 & 3	1,2,3,5,6,7
Terminal Connection LED	1 (+) & 4 (-)	4 (+) & 8 (-)
Terminal Connection Switch	1 & 4	4 & 8
Terminal Connection Phone Jack	1 & 4	4 & 8
Contact Rating	10A @ 120 VAC	10A @ 120 VAC
Operating Temperature	-30°F (-35 °C) ~ 150°F (66°C)	-30°F (-35 °C) ~ 150°F (66°C)

**ELECTRICAL WIRING**

