

SCI - SHORT CIRCUIT ISOLATOR



STANDARD FEATURES

- Can be placed at any location on SLC loop
- Checks the line for short circuit at power up. If the line is normal, the relay will be returned on. If a line short is detected, the relay remains open
- Indication of a single short circuit by a yellow LED

SPECIFICATIONS

Absolute Max. Applied Voltage	S, SC: 41 VDC
Supply Voltage Nominal	S, SC: 33 VDC
Normal Current Consumption	270 μ A (Typical)
Active Current Consumption (Short Circuit Condition)	10 mA (Typical)
Dimensions	4.2"W x 4.7"H x 1.4"D
Weight	1.4 oz
Visual Indicator (Yellow Status LED)	- No indication in normal condition. - On steady in active (short) condition.
Operation Temperature Range	0°C (32°F)~ 49°C (120°F) Non-condensing
Allowable Ambient Humidity	90% Non-condensing

Specifications subject to change without notice.

OPERATION

* Class A Configuration Wiring:

The DCP-SCI short circuit isolator should be located between any devices on the SLC loop. In the event of a short on the SLC loop, the two adjacent isolators (closest isolators to the left and right of the shorted section) will activate and their respective LED indicators will be turned on. All devices between the active short circuit isolators will lose communication. This will prevent entire loop failure. Upon removal of the short condition, the DCP-SCIs will automatically restore the entire loop to the normal operating state.

* Class B Configuration Wiring:

The DCP-SCI short circuit isolator should be located between any devices on the SLC loop. In the event of a short on SLC loop, an isolator closest to the shorted section will activate and the LED will be turned on. **All the devices beyond the shorted section will lose communication.** Upon removal of the short condition, the DGP-SCI will automatically restore the entire loop to the normal operating state.

For the best performance of DCP-SCI short circuit isolator, use class A configuration.

WIRING:

Note: All wiring must conform to local codes, ordinances and regulations.

1. Install module wiring in accordance with job drawings and appropriate wiring diagram.
2. Secure the module to an approved electrical box (supplied by installer).

MOUNTING REQUIREMENTS: 4" SQ Electrical box or double gang.

PRODUCT LISTINGS

SIGNALING

LISTED
S5694


CS943



California
State Fire
Marshal
7300-0410:150

MEA
284-91-E Vol. IV

Continued on back.

Hochiki America Corporation

7051 Village Drive, Suite 100 Buena Park, CA 90621-2268
Phone: 714/522-2246 Fax: 714/522-2268
Technical Support: 800/845-6692 or technicalsupport@hochiki.com



Find latest revision at www.hochiki.com



ENGINEERING SPECIFICATIONS

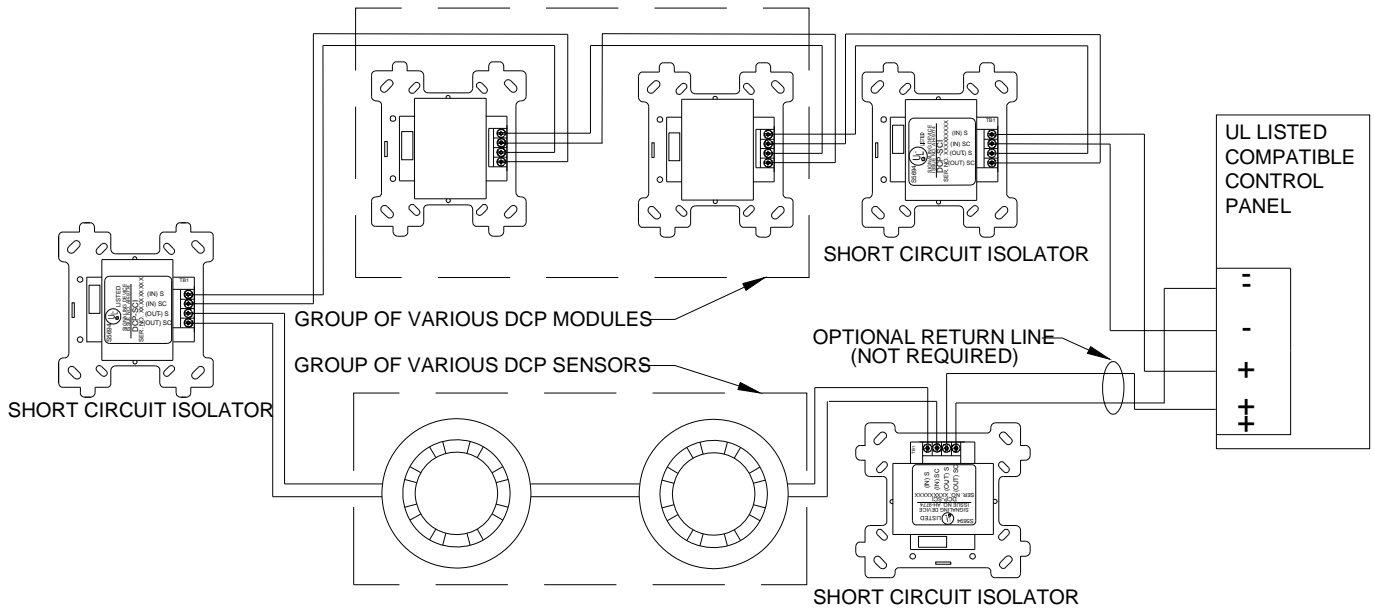
The contractor shall furnish and install where indicated on the plans, the Hochiki DCP-SCI short circuit isolator. The modules shall be UL listed compatible with Hochiki Digital Communications Protocol (DCP) supporting control panel loops. The isolator module must be suitable for mounting in a standard 4" square electrical box or double gang. The isolator module must provide a yellow LED for indication of status.



Back side of a DCP-SCI

INGENIERIA

WIRING DIAGRAM



TYPICAL WIRING DIAGRAM EXAMPLE, CONNECTED TO A COMPATIBLE LISTED CONTROL PANEL

ALL WIRING SHOWN IS SUPERVISED AND INHERENTLY POWER LIMITED. ANY COMBINATION OF MODULES AND/OR SENSORS MAY BE PLACED BETWEEN ISOLATORS